

# August 2010 Workshops

## at The Art League School

### Jump into Metal Clay

Paula Coupe

This workshop provides an opportunity to learn about and experiment with the three types of metal clay – Precious Metal Clay (PMC), and the newest clays, BRONZclay and COPPRclay. Students have the opportunity to make a pendant and/or earrings with each clay type, and learn the different properties, techniques, and finishing possibilities for all three. All levels are welcome. A \$50 tool and materials fee, which includes enough clay for each project, is payable to the instructor. Additional tools and clay are available for purchase.

\$160 TBA

7:00pm–10:00pm

### Raku Firing Workshop

Staff

Experience the Raku firing process and learn about its vibrant possibilities. Each participant may bring up to six pieces of previously bisque-fired ware. Glazes are included with the firing fee. Raku tongs and safety gear are furnished. For further information regarding this fascinating method of firing your work, contact Blair Meerfeld at The Art League Ceramics Department: [blairm@theartleague.org](mailto:blairm@theartleague.org).

\$75 First Saturday of each Month

10:00am–4:00pm

### Vermont Landscape Painting Retreat

Susan Abbott

Participants spend five days working plein air in and around Susan's 1840's farmhouse and studio, surrounded by woods, meadows and hills near Plainfield, Vermont. Students may work in watercolor, oil, acrylic or pastel, though no oil may be used in Susan's studio. Some prior painting experience is required, but first time plein air or landscape painters welcome. Class is limited to 12. Lunch and snacks are provided. Travel and lodging are additional. Please call the school for further information.

\$495 August 5–11, 2010

(Thurs–Wed)



Susan Abbott



Blair Meerfeld

### A Week in the Indiana Countryside

Diane Tesler

Students spend a week of intensive painting in Diane's Midwest summer hideaway. Northern Indiana farm country is a land of space and austere beauty. A variety of locations around the town of Kewanee (population 500) and the surrounding countryside offer wonderful painting possibilities. Students may work in oil and gouache. Each class is limited to five. Lunch and dinner at Diane's house are included. Travel and lodging are additional. Please call the school for further information.

\$485 August 9–13, 2010

(Mon–Fri)

\$485 August 16–20, 2010

(Mon–Fri)

### Clay Animation Movie Camp (ages 8–15)

Andrew Morgan

This camp is ideal for anyone who has ever wanted to make his/her own animated movies. Students go through all the steps the pros take—from character creation to construction, sometimes even destruction! Students use real animator's clay, design sets, and work in small groups to make a 3-minute movie with sound and voices! Participants should bring a bag lunch. Twelve students maximum, no adults.

\$365 August 16–19, 2010

(Mon–Thurs) 10:00am–2:30pm

### Jumpstart in Ceramics

Blair Meerfeld Jen Pease

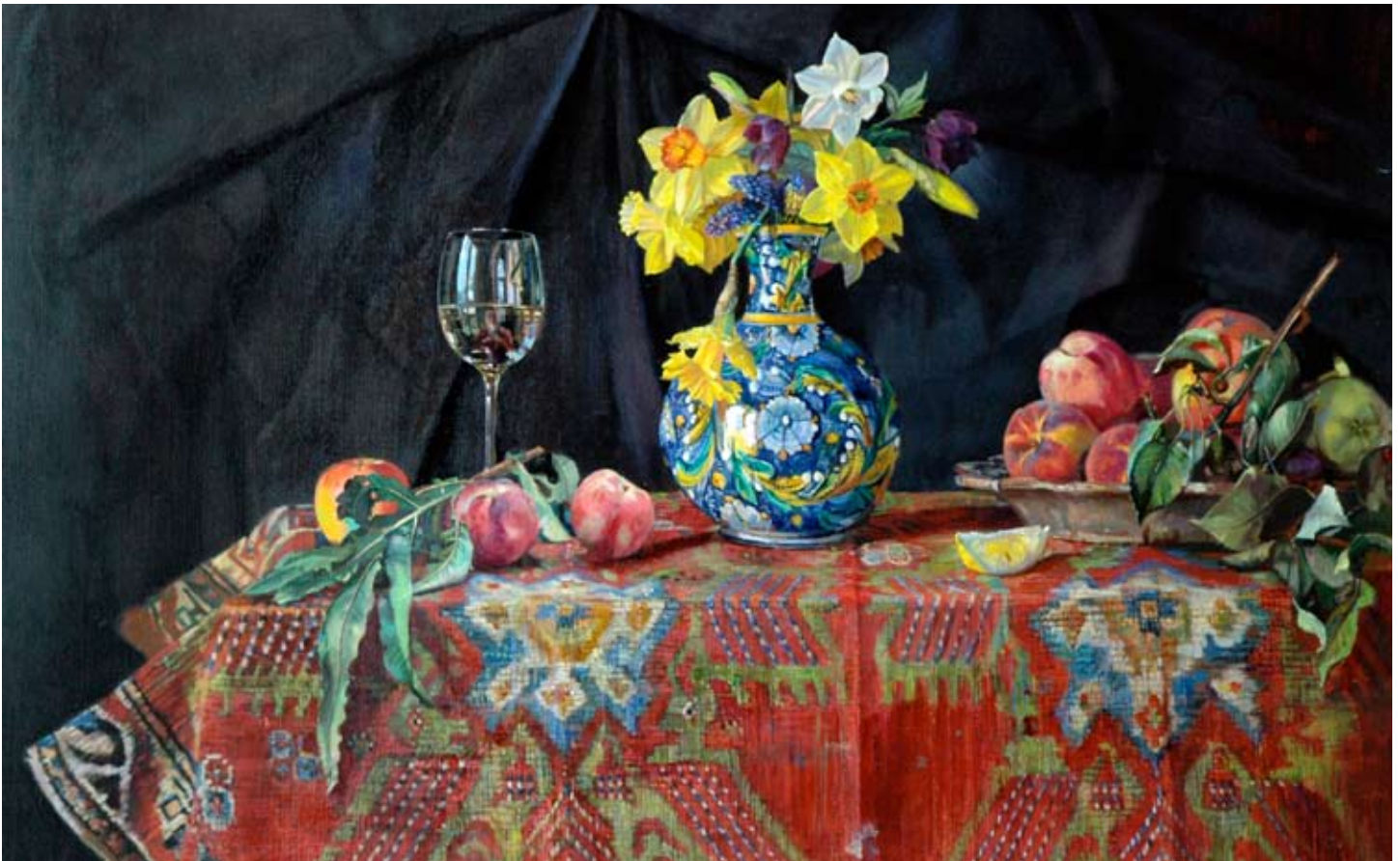
Have you always wanted to try pottery? In this one-day event participants explore the creativity and diversity of clay in a fun, relaxed environment. Supplies are included.

\$40 August 21, 2010

(Saturday) 10:00am–12:30pm

## theartleague

105 North Union Street Alexandria, VA 22314  
[www.theartleague.org](http://www.theartleague.org) 703.683.2323



Danni Dawson

### Summer Flowers in the Spontaneous Style of Sumi-é

Charlene Fuhrman-Schulz

This workshop offers intensive instruction for those who wish to paint flowers in the splashing ink style of Sumi-é painting. It is ideal for the first time painter or for those wishing to refine their skills. The workshop offers step-by-step, hands-on instruction and concentrates on flowers such as the iris, wisteria, morning glory, peony, and lotus. In addition to studying the plant and blossom, instruction includes the background wash, and typically associated subjects such as birds, rocks, butterflies, and bees.

\$170 August 21 & 22, 2010 (Sat-Sun) 10:00am-4:00pm

### Painting in Danni's Living Room or Rose Garden

Danni Dawson

Participants paint exquisite flower scenes in Danni's beautiful rose garden or paint from interesting still lifes arranged in her home. Painters with previous experience savor the rich colors and delicate shapes of nature in full bloom, or delight in the variety of subject matter present in still lifes. A gourmet lunch is provided each day. The workshop is located offsite in Arlington.

\$415 August 23-27, 2010 (Mon-Fri) 10:00am-4:00pm

### Jumpstart in Weaving

Marilyn Harrington

Experience the fun of weaving a beautiful cotton scarf. Looms are ready to weave and students learn to throw the shuttle. Participants may weave a scarf in red, green, or blue. Tuition includes loom rental and materials.

\$100 August 28, 2010 (Saturday) 10:00am-4:00pm

### The Art of Caricature

David Carter

Combine humor with a penchant for expression and the result is caricature. The ability to capture a subject's likeness and personality with a simple drawing is a sought-after skill, and this workshop gives the student knowledge in interpreting the endless dynamics of the face through gesture, shape, proportion, line, rhythm, and color. Students learn to distort and simplify faces while working from photos and models. Model fees are extra.

\$170 August 28 & 29, 2010 (Sat-Sun) 10:00am-4:00pm

### A Week in Thomas, West Virginia

Danni Dawson, Mike Francis & Paul Lucchesi

Spend a week painting still life or landscape with Danni Dawson and Mike Francis, or sculpting with Paul Lucchesi. Participants may choose to focus on one style or switch freely between the three instructors. Workshop includes lunch. Lodging is not included.

\$495 August 30-September 3, 2010 (Mon-Fri) 10:00am-5:00pm



David Carter