

March 2009

Thank you!

This year we received a record number of donated artworks to the Patrons' Show and were able to sell more tickets than in recent years. The Art League staff would like to thank all of our generous artists for your donations and all our volunteers who contributed to making the Patrons' Show a success. You were truly integral to the event, and we could not have done it without you! We would also like to thank our last draw sponsors, Alexandria Symphony Orchestra and Metro Stage.

Daniel Wise

383: Viewing the Potomac

Inspired by the beauty, diversity, the ever-changing atmosphere and environment of the Potomac River and its surroundings, pastelist Daniel Wise has created a series of paintings depicting scenes along the Potomac River. "383: Viewing the Potomac" will be featured at The Art League Gallery March 5 – April 6, 2009.

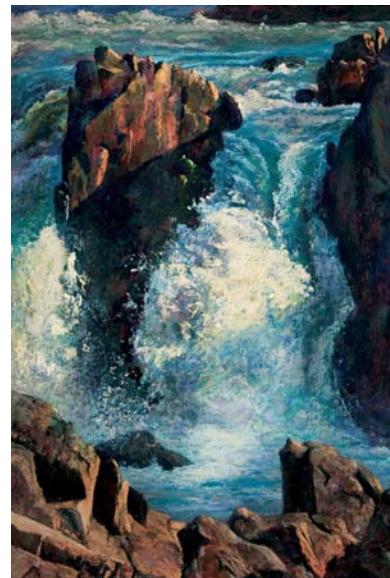
Wise grew up in Colorado, far from large bodies of water. Now that he lives in Washington, he's drawn to render a different landscape. "The Potomac and the immediate surroundings are constantly evolving and changing... the colors, trees, wildlife, and the people. There is so much diversity."

"I'm attracted to a scene or composition by light and how it interacts with the landscape. How the light effects the atmosphere, the fog, snow, or the sunset, and how the light interacts with different objects is particularly intriguing."

Pastel is integral to Wise's work. "I like to be close to what I'm doing, have my hands in it. Pastel is very tactile, and is such a versatile medium. It can be used to create drawings or paintings. My works are paintings. I go for color, value, and shape and approach a pastel painting like I would an oil painting. They are the same pigments that are in oil paints, minus the oil."

"I want viewers to come away with a sense of the diversity of the landscape. I want them to get a sense of the many moods of the Potomac.... You can go back to the same spot, look at the same scene from the same vantage point and it will always look different. I hope viewers will come away with a love of landscape."

383 is the distance in miles of the Potomac River. Rendering scenes along the river is a continual project for Wise. For his show at The Art League Gallery, viewers can enjoy scenes from Harpers Ferry, WV to Cumberland, MD to the DC area. Wise hopes to get from Fairfax Stone and to the Chesapeake Bay as he continues the project.



Opening Reception: Thursday, March 12, 6:30 – 8:00 pm

Meet the Artist and Pastel Demonstration: Saturday, March 21, 1:00 – 4:00 pm

President's Message

I am happy to say that we had a great Patrons' Show this year. All of you were so generous with your donations of artwork that we are able to have a start to next years Patrons' Show. We had 650 pieces of art donated by our loyal members. I know that your generosity was due to your great concern for The Art League. I hope you will keep that concern and love for The Art League. We always need volunteers, donations and help. I asked last month and again this month, if you are interested in volunteering for Board or Committee work, please let me know. I will give your names to our hard working nominating committee.

I would like you to welcome two new members of the Board. Ellen Fishbein and Maggie Garten have joined the Board. They will be a great asset to the Board with their financial experience. Again, thanks to all of our members and please consider volunteering or contributing to The Art League.

Betsy Anderson
President, The Art League Board
703-684-5579

March Gallery Show: "Real/Unreal"

This exhibit will explore how artists deal with reality from photorealism to abstraction. A broad interpretation of the theme will include everything from totally abstract works to realistic renderings.

Judy Jashinsky (www.jashinsky.com), a world-renowned artist living in the D.C. area, will jury this show. Her works are in many major collections including The National Gallery of Art, The Corcoran, The Museum of Women in the Arts and the Chicago Art Institute. She has been featured in magazine and newspaper articles, such as Art in America and The Washington Post. Her 2004 installation at the McLean Project for the Arts, "Artemisia Gentileschi: An Artist's Life" was widely reviewed and has been exhibited through-out the country.

April Gallery Shows

April offers members the opportunity to enter an All-Media Show and "Reused – Recycled."

"Reused – Recycled" is open to works made completely from recycled or reused materials, this must include framing. This is your chance to have some fun. Collage some old bits of paintings together, glue the detritus of your past onto a wooden board. Use found objects to create an intriguing composition or sculpture. The juror for "Reused – Recycled" is Joe Hicks, professor of ceramics at George Mason University. Daniel Shay will jury the All-Media Show.

Opportunities for Artists at The Art League and Beyond

2009 Juried Multimedia Art Exhibition

Park Gables Gallery in Harrisonburg, VA is accepting submissions for this 26th annual national exhibition, which is critically acclaimed and receives over 2000 visitors each year. Between one and three entries must be received by March 26, 2009 in the form of 5"x7" photographs. Over \$5,000 in awards. Visit www.vmrc.org/artexhibition for entry form.

"Sculptors of The Art League," at Washington Square, May 4, 2009 – July 31, 2009

The "Sculptors of The Art League" exhibit is a fantastic opportunity for three-dimensional member artists to showcase their work in a beautiful space. The show will be held in the Washington Square Building, 1050 Connecticut Avenue, NW in downtown Washington, DC. This space is well suited for large works, so this is a great opportunity for those of you who work large!

Artists may submit up to three pieces digitally. Submissions must be free-standing. The deadline for submissions is Monday, March 2. Receiving for accepted pieces is Sunday, May 3. Rebecca Cross of Cross MacKenzie Ceramic Arts will jury the exhibit. Cross has lectured and exhibited nationally and internationally. You may view her works at www.rebeccacross.com. A complete "Call to Artists" is available in the gallery or via e-mail, barbarap@theartleague.org.

Art Travel Workshops

Istanbul, Turkey, Ankara and environs including Cappadocia with Gwen Bragg

June 4 – 15, 2009

Plein air painting

Explore Turkey, home of 13 civilizations and three great empires (the Roman, Byzantine and Ottoman). The "cradle of civilizations," boasts a treasure trove of historic art and architecture, as well as decorative arts and traditional handicrafts. Gwen has painted here before, and is familiar with all the prime locations, including the Blue Mosque and the Spice Bazaar. Experience the area of Cappadocia, unique in all the world for its geographic volcanic tufa formations referred to as "fairy chimneys." If you travel to Turkey, you must experience this natural wonder! In ancient times, humans hollowed out homes and constructed underground cities (to escape invaders) utilizing these formations. There will be an additional airfare charge (approx. \$200 per person) for a domestic flight within the country to this region, but it is an adventure not to be missed! The itinerary includes five nights in Istanbul, two in Ankara, and three in Cappadocia. \$2,995, limited single rooms are available at an additional charge.



Tiptoe Through the Tulips: Holland in the Spring with Marsha Staiger

April 13 - 21, 2009

A museum exploration / mixed media workshop

****Registration deadline is Tuesday, March 3 at 5:00 pm****

Join Marsha Staiger and welcome Spring with tulip time in Holland. A museum exploration, mixed media workshop. Explore the sights and museums of Amsterdam, and interpret with graphite and color. On the agenda are visits to the Van Gogh Museum, the Rijksmuseum, the Stedelijk Museum, Keukenhof Gardens, the windmills, Ann Frank's House, Rembrandt's House, the fishing villages of Volendam and Marken among others. Workshop participants will exhibit their art pieces at the Alexandria Symphony Orchestra's "Passionate Voice" Concert, May 2, 2009. Workshop Price: \$2,385 per person, double occupancy. Single accommodations available for an additional charge (extremely limited).

English Villages and Gardens: Painting the British Landscape, The Cotswolds with Peter Ulrich

June 14 - 23, 2009

Plein air painting

A wonderful opportunity for plein air painting in one of the most intensely scenic areas of England. Located approximately two hours west of London, the Cotswolds encompass ancient villages and towns rich in some of Europe's finest domestic architecture. Situated here are the uniquely beautiful and historically protected thatched cottages of this region. Visits to Bampton, Cloanfield, Woodstock, Burford, Windrush House, and Blenheim Palace, home to the 11th Duke of Marlborough, are on the agenda. \$1,995 per person, double occupancy. Limited single rooms and some larger rooms are available for an additional charge.

NEW for Spring 2009 ...

Plein Air Landscape Painting, Fredericksburg, Virginia: the Belmont Estate - home of Gari Melchers with Bobbi Pratte View the extensive art collection and paint the estate gardens. Details are being finalized as this goes to press.

Also NEW... Bobbi will be teaching a Plein Air Landscape Class at The Art League, on Thursday mornings, 9:30 am - 12:30 pm beginning April 23. The session is seven weeks and the cost is \$150.

Looking Ahead ...

October 2009 - Napa Valley, California: Plein Air Painting in the Vineyards with Bobbi Pratte Combine the worlds of art and wine, paint the vineyards and visit impressive art collections.

April 2010 - Rome, Italy with Robert Liberace

For questions or additional information please contact Margaret Cerutti 703-683-1780 x 13, margaretc@theartleague.org

School News

Workshop with Ceramicist Blair Meerfeld

We are excited to welcome ceramicist Blair Meerfeld to The Art League on March 22 & 23 to teach a special workshop "Making Pots from Parts."

A native of Colorado, Blair uses salt-glaze on his work and traces his interest to years of studying and collecting historic salt-fired pots from Europe and North America. His influences range from architecture to farm machinery. This weekend will feature throwing, assembling, discussion and observation of form in functional pottery. After warming up with basic shapes, participants will move into making parts to assemble into more complete forms. Meerfeld will share his thoughts about creating tension and interest through vertical and horizontal line, and his desire to elicit an emotional response to his work.

This is a wonderful opportunity to learn new techniques and gain inspiration from a well-known visiting artist.



Variety of Fiber Classes

Fiber classes are in full swing at The Art League. A few of the exciting things being offered in the Spring include Basic Weaving, Beginning and Intermediate Knitting, Rug Weaving, and Silkscreen for Textiles. Two-day workshops are also being offered in such things as Spinning, Fiber Sculpture, Felting, and Surface Design. The website will be updated continually as we add new courses, so be sure to check back often or call us with any questions.

Spring Workshops Starting Soon

The Essentials of Light and Dark with David Carter: March 21 & 22

Architectural Photography with Libby Cullen: March 21 & 22

Interpreting Light in Watercolor with Steve Fleming: March 31- April 3 Painting Streams, Waterfalls, and Rocks

in Watercolor with Carolyn Gawarecki: March 25 & 26

Florals: Wet-in-Wet with Susan Herron: March 28 & 29

Personal Projects & Still Life with Priscilla Treacy: March 30 – April 3

Thinking Inside the Box: Stories from Scrap with Rosemary Lockett: April 4 & 5

Registration for the Spring Term is still open! Visit our website for details.

Board of Directors

President: Betsy Anderson

First Vice President: Kathleen Bishop

Second Vice President: Linda Maldonado

Secretary: Betsy LeBleu Curry

Members-at-Large: Gwen Bragg, Duke DePlanque, William Doying, Ellen Fishbein, Nancy Pane Fortwengler, Maggie Garten, Joyce Jarrett Thor, Linda Kirvan, Jane McElvany Coonce, Jane Louise McGavin, Marilyn Milici, Diane Tesler

Outside Legal Advisor: Timothy McEvoy

theartleague

105 North Union Street
Alexandria, VA 22314
www.theartleague.org

gallery: 703.683.1780
school: 703.683.2323
store: 703.548.8127
development: 703.519.1741

Calendar

March 2009

March 1/Sunday, 2:00 - 4:00 pm: Closing reception for Student/Faculty show. Awards, 3:30 pm.
March 2/Monday, 10:00 am - 4:00 pm: Come help paint the gallery! Join a great group as we patch and paint the walls of the gallery, restoring it to its original glory. We only do this twice a year so don't miss out! If you sign up to help you can enter your work for the March show when you come in to paint.
March 2/Monday, 6:30 - 8:30 pm: RECEIVING for "Real/Unreal" and March Bin Gallery.
March 3/Tuesday, 10:00 am - 12:00 noon: RECEIVING continues.
March 3/Tuesday, 6:30 - 7:30 pm: Early pick up of unselected works.
March 4/Thursday: "383: Viewing the Potomac," Daniel Wise's Solo Artist Show of pastel paintings opens.
March 12/Thursday, 6:30 - 8:00 pm: Opening reception for "Real/Unreal" and "383: Viewing the Potomac." Awards, 7:00 pm.
March 21/Saturday, 1:00 pm: Talk and pastel demonstration by Daniel Wise.

April 2009

April 6/Monday, 6:30-8:30pm: RECEIVING, "Reused – Recycled" and All-Media
April 7/Tuesday, 10:00 am - 12:00 noon: RECEIVING continues
April 7/Tuesday, 6:30-7:30pm: Early pick up of unselected works
April 9/Thursday, 6:30-8:00pm: Opening reception for "Reused – Recycled," All-Media, and Christine Giammichele's solo show, "Roots and Wings." Awards presented at 7:00pm.