

March 2010 Workshops

at The Art League School

Spinning: Survey of Cultivated Fibers

Silvia DeMar

Students are introduced to spinning a variety of fibers: cotton, flax, ecospun, bamboo, soy silk, silk caps and hankies. Some previous spinning wheel experience required. Use a school wheel or bring your own.

\$45 March 1 & 8, 2010 (Wednesday) 7:00pm–9:30pm

Jumpstart in Nuno Felting

Renate Maile-Moskowitz

Nuno or lamination felting has become the couture craze of felting in Europe and on international runways. This felt is lightweight with drape and flexibility. Students explore the technique, which permanently combines fabric and wool through a felting process without sewing or hemming. Materials are included.

\$90 March 1, 2010 (Monday) 12:00–5:00pm
\$90 March 21, 2010 (Sunday) 12:00–5:00pm

Dye & Use: Silk Hankies & Caps

Sue Wroton and Ginny McNitt

Learn how to dye silk hankies and caps and then incorporate them into your projects. They can be used in weaving, knitting, or spun.

\$75 March 6, 2010 (Saturday) 9:30am–5:30pm

Linoleum Cuts

Penny Barringer

A relief printing process that doesn't require a press to print, linoleum is an easy to cut alternative to wood. Lab fee \$20

\$155 March 6 & 7, 2010 (Sat–Sun) 10:00am–3:00pm

Contemporary Glass Fusing for Jewelry

Judith Conway

Working in a professional glass studio, students create fused glass pendants, earrings, and pins in this introductory workshop while learning to exploit the transparency and depth of glass. Students learn the techniques of layering colored glass, using dichroic coatings, shaping blanks with saws and grinders, and using multiple firings to create a professional look. No prior experience is required. A \$100 materials fee covers all materials and is payable to the instructor. This workshop is held offsite at the instructor's studio in Maryland.

\$195 March 6 & 7, 2010 (Sat–Sun) 10:00am–4:00pm

Card Weaving

Linda Hurt

Card weaving, also known as tablet weaving, is a method of producing narrow straps, belts, leashes, and trims. The earliest evidence of card weaving dates to 400 BC. Bands range from the simple and fast to complex and very time consuming. Students concentrate on the less elaborate types and reading weaving patterns and warp cards with their choice of colors.

\$55 March 13, 2010 (Saturday) 1:00pm–6:00pm

Silver Soldering for Jewelry

Gretchen Raber Tina Chisena

Students spend an intensive hands-on day devoted to working with the acetylene torch. Torch safety is stressed along with techniques, materials and equipment. Participants will practice with silver and silver solders. Materials are included.

\$90 March 13, 2010 10:00am–4:00pm Raber

Surface Design: Shibori

Denise Vauthier

Shibori is a Japanese word for the technique of resist dyeing fabric by stitching, binding or wrapping. Students learn the basics of this art, Arashi (pole wrapped), Trikit (stitch resist), and Boshi (capping), while making samples using silk and cotton fabrics. Dyes, discharges and the care of silk are covered. Students design and complete two personal silk scarf projects. Materials fee of \$45 due at first session.

\$170 March 13 & 14, 2010 (Sat–Sun) 10:00am–4:00pm

Fiber Sculpture Workshop

Julie Booth

Starting with a "skeleton of wire," students construct a small-scale fiber figure or sculptural form. This intensive 2-day workshop covers how to build a form, wrapping, fabric collage, bead embellishment, and polymer mask-making techniques. A \$15 materials fee is payable to the instructor.

\$170 March 14 (Sun) & April 11 (Sun), 2010 10:00am–4:00pm

Julie Booth





Susan Abbott

Figure in Action

Robert Liberace

The expressive movement and energetic form of the figure has influenced artists for centuries. This course will explore the dynamic potential of the human form's movement and energy, and introduce these concepts into drawings. Demonstrations are given, focusing on arrangement of the model and drawing technique. Model fees are extra.

\$255 March 19-21, 2010 (Fri-Sun) 10:00am-4:00pm

Traveling with your Sketchbook

Susan Abbott

This popular workshop teaches students to use gesture, contour, collage, and color to record their travels. Participants learn to use the sketchbook as a journal, and to make it a work of art. Student use picturesque Old Town Alexandria as source material, and for inspiration look at many artists' sketchbook journals. Past students say, "This class changed my life!"

\$195 March 19, 2010 7:00pm-9:00pm (Fri) &
March 20 & 21, 2010 10:00am-4:00pm (Sat-Sun)

Jumpstart in Weaving

Marilyn Harrington

Experience the fun of weaving a beautiful cotton scarf. Looms are ready to weave and students learn to throw the shuttle. Participants may weave a scarf in red, green, or blue. Tuition includes loom rental and materials.

\$80 March 20, 2010 (Saturday) 10:00am-4:00pm

Dyeing: MX Dye/Fiber Samples

Sue Helmkin

Students prepare samples of different fibers, such as cotton, tencel, bamboo, linen and silk for dyeing. Each fiber type is dyed with MX dyes. Students leave with a sample set for reference on future projects. Tuition includes materials.

\$85 March 20, 2010 (Saturday) 10:00am-4:00pm

Jumpstart in Ceramics

Blair Meerfeld Jen Pease

Have you always wanted to try pottery? In this one-day event participants explore the creativity and diversity of clay in a fun, relaxed environment. Supplies are included.

\$40 March 20, 2010 (Saturday) 10:00am-12:30pm

Innocence and Experience

Kathy Beynette

Infuse your painting with wild and free energy. Break some old habits, lose some inhibitions and rediscover truths about your personal vision. Learn strategies for invigorating your work and reconnect with the creativity of childhood. Designed for all artists although work in class does not include oil due to time restraints.

\$170 March 20 & 21, 2010 (Sat-Sun) 10:00am-4:00pm



Mike Francis

theartleague

105 North Union Street Alexandria, VA 22314
 www.theartleague.org 703.683.2323

Pop-Up Books: Beyond the Fold

Nancy Johnson

Making pop-ups involves trial and error and a sense of play. Students begin to understand how strategically placed folds raise and lower flaps, causing a specific effect. Participants will make “working models” of each pop-up taught, and learn the magic behind each motion. The instructor will collect a materials fee of \$20 to cover the cost of consumable supplies.

\$170 March 20 & 21, 2010 (Sat-Sun) 10:00am-4:00pm

A Deeper Perspective

Patrick Kirwin

Many artists cite “perspective” as one of the most difficult challenges to overcome when setting up a composition. In this workshop, students enhance their ability for critical observation as they learn the rules of perspective, perspective measurement, division of shapes into an even or odd number of spaces, circles in perspective and inclined planes. This knowledge can then be applied to real drawing situations and used to create clear spatial order within pictures.

\$170 March 20 & 21, 2010 (Sat-Sun) 10:00am-4:00pm

Medium - More or Less

Marsha Staiger

Explore the many products available to enhance and extend acrylic paints. Participants will investigate the possibilities pouring, dragging, and carving with a variety of acrylic mediums. A supply fee of \$25 is payable to the instructor, and covers the use of mediums.

\$170 March 20 & 27, 2010 (Saturday) 10:00am-4:00pm

Figure Sculpture

Paul Lucchesi

Students of all levels study portrait and figure sculpture with an internationally famous sculptor. Students work in clay, with emphasis on anatomy, technique, and expression. Three bags of clay are included. Model and firing fees are extra and may be paid to the instructor.

-\$380 March 22-25, 2010 (Mon-Thurs) 10:00am-3:30pm

Marsha Staiger

The Monotype Party

Mike Francis Thomas Hipchen

In the last quarter of the 1800's, monotype parties were the rage for all artists in Europe and America. In this two-day intensive workshop participants use their drawings, paintings, or photos as reference, as they explore the printing territory pioneered by Edgar Degas. Demonstrations include traditional monotype printing techniques and manipulation of the image with watercolor, gouache, and pastels. A gourmet lunch is served daily. A \$20 lab fee, payable to the instructor, covers all supplies and lunch. This workshop is offsite.

\$200 March 20 & 21, 2010 (Sat-Sun) 10:00am-4:00pm

Landscape in Acrylic

Susan Herron

Students learn to use acrylic like transparent watercolor and as an opaque medium. Participants experiment with acrylic on a varnished surface with lifting, layering, and texturing to create an exciting landscape.

\$170 March 20 & 21, 2010 (Sat-Sun) 10:00am-4:00pm





Carolyn Grossé Gawarecki

Intermediate/Advanced

Continuing the Search-Working in a Series

Joyce McCarten

Working on a series of small paintings allows students to discover new areas of interest in their artwork. Still life, landscape, and figure serve as inspiration and participants are encouraged to take more risks as each successive piece moves further from its literal interpretation. The last 2 days of the workshop are devoted to beginning large paintings based on information gleaned while creating the series. Model fees are extra.

\$415 March 22-26, 2010 (Mon-Fri) 9:30am-4:30pm

Masters of Color: Homer, Hopper and Sargent

Susan Abbott

This in-depth workshop uses three great artists as guides as students explore each master watercolorist's individual technique, composition, and color use. Participants then apply what they've learned to their own painting. This is a rare chance for intensive study of watercolor's greatest painters. A prior watercolor class is a prerequisite.

\$335 March 23-26, 2010 (Mon-Fri) 10:00am-4:00pm

Painting Marshes

Carolyn Grossé Gawarecki

Students look for the patterns created by streams winding through the tidal grasses and mud flats. Study of reflections along the waters edge and the brush strokes necessary to produce grass textures are covered. Students create beautiful skies to complement the scene, and then add some wildlife for a center of interest. Each class begins with a demonstration, followed by work time and individual help, and ends with a class critique.

\$170 March 24 & 25, 2010 (Wed-Thurs) 10:00am-4:00pm

Pots/Possibilities

Nick Joerling

Beginning with wheel thrown round pots students push, cut, coax, and stretch these forms to create something new and exciting. Focus is on utilitarian pots but some liberty may be taken. Various ways of making handles, lids, and spouts are explored. Process is paramount, humor is emphasized, and taking chances is encouraged. Some throwing experience is recommended. Pots are bisqued but not glaze fired. Cost includes clay.

\$195 March 26, 2010 (Fri Slide show/pot luck) 7:00pm-9:00pm & March 27 & 28, 2010 (Sat-Sun) 10:00am-4:00pm

From Amateur to Professional

Susan Abbott

This very intensive workshop demystifies the business side of being a professional artist. Students learn about building a resume, approaching galleries, organizing shows, coping with rejection, slides, publicity, marketing, taxes, and many other topics. Each participant receives a booklet of worksheets and information.

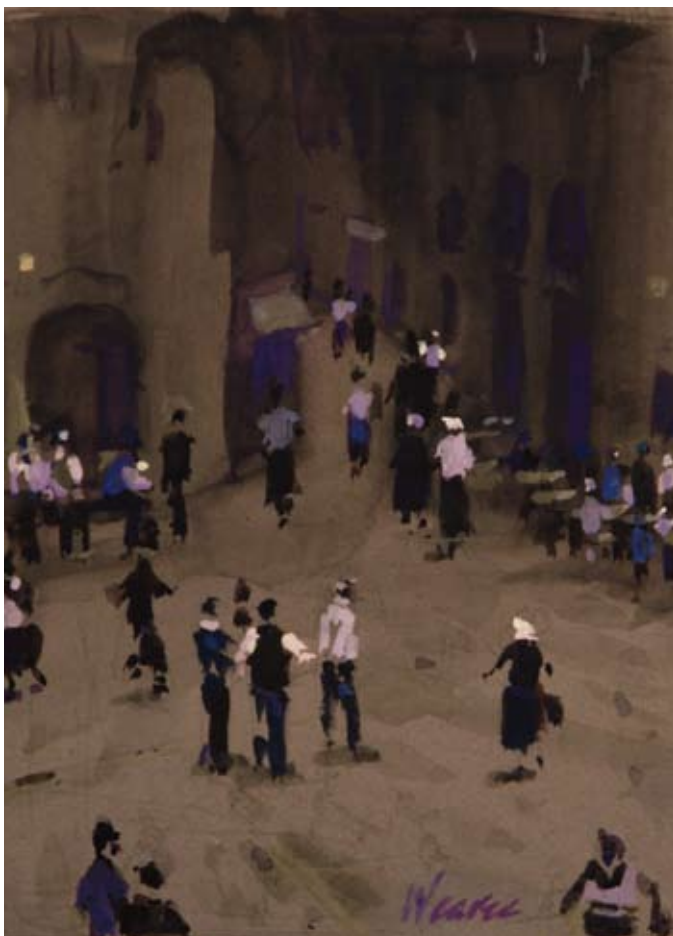
\$95 March 27, 2010 (Sunday) 10:00am-4:00pm

Figure Exploration

Avis Fleming

In this figure workshop, the "continuous drawing" approach of sculptor Rodin is the key to exercises that improve observational skills and drawing techniques. Various media in both color and black & white are explored by focusing on the work of a particular master artist. Abstraction, expressionism and composition are important areas of concentration. Some drawing experience is helpful, but all levels are welcome. Model fees are extra.

\$170 March 27 & 28, 2010 (Sat-Sun) 10:30am-4:30pm



Rick Weaver

Drawing 101

Rick Weaver

All levels of artists gain a better understanding of the principles of drawing from observation. Demonstrations and exercises are used to explain perspective, light and shadow, line and mass, and simplifying techniques. All topics are adapted to levels suited to the student body. This is a great place to start for beginners and an invaluable back-to-basics course for the more experienced student.

\$170 March 27 & 28, 2010 (Sat-Sun) 10:00am-4:00pm

Basic Matting and Framing

Eileen Yeager & Ron Yeager

This 2-day workshop covers the fundamentals of matting and framing, excellent for artists, collectors or anyone interested in getting into the framing business. Students learn design and preservation techniques, knowledge of tools, basic and custom mats, hands-on mat cutting, mounting, and pre-cut frame assembly. A \$20 materials fee, payable to instructor, covers supplies and use of tools.

\$170 March 27 & 28, 2010 (Sat-Sun) 10:00am-4:00pm

Creative Matting and Mounting

Eileen Yeager & Ron Yeager

Have you already mastered cutting single and double mats? Want to learn more sophisticated and decorative matting techniques like ovals, circles, and V-grooves? Wonder how to float paper art or how to mount 3-D items in a shadow box? All this and more are covered in the one day hands-on workshop. A \$20 materials fee, payable to instructor, covers supplies and use of tools.

\$90 March 29, 2010 (Monday) 10:00am-4:00pm

Abstract Approaches to Watercolor

Steve Fleming

This class explores both transparent and opaque pigments, pour color, stencil, collage, gesso and rice paper grounds, as well as other abstract approaches to painting. Each day introduces a design and color component to help focus the day's efforts and encourage students to break through some creative barriers. Students should have some painting experience. Acrylics are welcome.

\$170 March 27 & 28, 2010 (Sat-Sun) 10:00am-4:00pm

Sumi-é: Peony

Charlene Fuhrman-Schulz

In popular Chinese lore, when the peony opens, the perfume is thought to attract bees and butterflies from a thousand miles away. This workshop offers intensive instruction in sumi-e for those painting the peony for the first time or those wishing to refine their skills. The workshop offers step-by-step, hands-on instruction and concentrates on the many ways of painting the peony, the background wash, and associated subjects found in peony paintings such as birds, rocks, butterflies and bees.

\$170 March 27 & 28, 2010 (Sat-Sun) 10:00am-4:00pm

Creative Collage with Acrylic

Susan Herron

In this workshop, students combine hand-decorated, richly textured papers with acrylic under-paintings to create strong personal designs. The results are often unexpected and satisfying!

\$170 March 27 & 28, 2010 (Sat-Sun) 10:00am-4:00pm

Susan Herron



theartleague

105 North Union Street Alexandria, VA 22314
www.theartleague.org 703.683.2323