

the **artleague**

**tidings**

**January 2011**

### **2011 Patrons' Show**

**The Art League's Patrons' Show was featured as the "Most Fun Art Fundraiser" in *Washingtonian Magazine's* July 2010 "Best Of" Issue. We want to keep that reputation this year!**



We're gearing up for the 2011 Patrons' Show! Our popular annual fundraiser draws hundreds of visitors to The Art League and *we need your help* to make it a success. We ask each member to donate artwork for this important fundraiser. The gallery will accept donations of artwork at any time. For each work of art donated valued at \$175 or more, we are able to sell an additional \$175 ticket to the event. We usually receive more than 500 works of art, making this an exciting event for our ticket holders, our artists, and The Art League! Artists may donate any number of framed pieces, and artists who donate two or more framed pieces may donate as many additional unframed works as they like and we will frame them for the show.

This is an excellent opportunity to have your work seen by a captivated audience. Last years Patrons' Show flickr site alone has had over 47,000 hits!

**We are thrilled to announce the return of the \$1000 Clemente Prize** presented to one of the donated pieces in the Patrons' Show. Something different this year—this award will NOT be selected by the juror. Rather, in the spirit of the event's exciting and random selection of artwork, the artist whose work is chosen by the first person whose ticket is drawn will be the winner of the \$1000 prize. This special award is sponsored by Mr. & Mrs. C. Daniel Clemente, who have been so generous in funding the Amelia T. Clemente Family Award and the Eleanor Boudreau Jordan Award each year.

In addition, the judge will select four \$100 Marian Van Landingham Awards. And the \$100 Charles E. Beatley, Jr. Popular Vote Award will be selected by vote of the ticket-holders. This year's juror is Marsha Staiger, Art League instructor, former Gallery Director, and Torpedo Factory Artist.

**We need as many volunteers** as possible to pull off this huge event – from helping with ticket sales day, hanging, framing, working in the gallery, to helping on the day of the event. This show is immensely popular and draws a enormous crowd year after year. Please contact the gallery (703-683-1780 or [gallery@theartleague.org](mailto:gallery@theartleague.org)) if you are interested in volunteering.

#### **Dates to remember:**

**Tickets go on sale:** Saturday, January 15, 2011 at 10:00 am

**Receiving Dates for Donations of Artwork:** February 7, 10:00 am - 8:30 pm (Work can also be delivered anytime between now and February 7)

**Dates of show:** February 9 - 20

**Late hours for viewing:** Thursday, February 10, 6:00 - 9:00 pm; Wednesday, February 16, 6:00 - 9:00 pm; Thursday, February 17, 6:00 - 9:00 pm

**Drawing:** Sunday, February 20, 5:00 pm

## January All-Media Membership Exhibit

**Receiving:** January 3, 6:30 - 8:30 pm. January 4, 10:00 am - 12:00 noon.

**Reception:** Second Thursday, January 13, 6:30-8:00 pm

**Awards:** TBA

**Juror:** Lee Newman

Newman holds a BFA and MFA from American University. He is a Fulbright Scholar from the Academy of Fine Arts in Vienna, Austria. Both an accomplished painter and printmaker, he has had numerous solo print shows in galleries such as the Courtyard Gallery in Washington, DC; Blue Pony Gallery in Charlotte, NC; Washington and Lee University, and at the Washington Printmakers Gallery in Washington, DC. His prints can be found in the permanent collections of several universities such as American University, George Washington University, Georgetown University, and Wellesley College. Several major institutions such as the National Gallery of Art, Metropolitan Museum of Art, National Museum of the Ukraine, Art Institute of Chicago, and the Corcoran Gallery of Art include his prints in their permanent collections. [Click here to view his work.](#)

---

### Alison Sigethy's *Understory*

Environmental artist Alison Sigethy draws inspiration from the natural world surrounding her. From collages created of natural fibers to sculptures made from recycled glass, her works have an innate organic quality. Her multimedia solo exhibit, ***Understory***, will be featured in The Art League Gallery, January 6 – February 7, 2011.

With this collection of works, Sigethy is creating an installation that invites the viewer to explore the often unnoticed, yet essential parts of the forest. She emphasizes the “quiet beauty” of the unseen through layers of glass fungi, collages that evoke the striations of cliff sides, and delicate snowflakes.

Sigethy works almost exclusively with recycled materials; the majority of her glass comes from the lenses of solar collectors. Dead tree trunks and driftwood collected on her kayaking sojourns are used as anchors for delicate crystalline elements. The use of these salvaged materials reinforces a pervasive theme in Sigethy's work: we, as a culture, generate too much waste. How can we reuse “trash” to create something beautiful?



**Exhibit dates:** January 6 – February 7, 2011

**Opening Reception with a performance by Karen Reedy Dance:** Thursday, January 13, 6:30 – 8:00 pm

**Artist Talk:** Thursday, January 20, 7:00 pm. Sigethy will talk about her background, her innovative glass-working techniques, as well as her use of natural and recycled materials.

**Storyteller Laura Bobrow:** Sunday, January 23, 1:00 – 2:00 pm. Award-winning local storyteller Laura Bobrow will spin whimsical and engaging tales against the backdrop of Sigethy's *Understory*. Appropriate for all ages.

---

### Upcoming Opportunities at The Art League

**New Member Orientation:** Thursday, January 6, 2011, 7:00 pm. This short seminar is a great introduction to Gallery procedures and a networking opportunity for new members or for those who are interested in becoming members. Current members are welcome to attend for a refresher course!

**Exhibition Prints Using Inkjet Printers with Color Management:** Tuesday, January 18, 2011, 1:00 - 4:00 pm. Photographer and Art League member John Burgess returns with his very popular discussion on creating successful prints using ink jet printers based on his experiences and training in color management. Burgess has been a photographer for 30 years and is constantly working to perfect his printing skills. Burgess says that, as a photographer, he strives to control the entire process, from image capture to the exhibition print. Please call the gallery at 703-683-1780 or email [roseo@theartleague.org](mailto:roseo@theartleague.org) to reserve your space.

**The Best Is Yet To Be: Later Life Creativity: Tuesday, January 18, 2011, Torpedo Factory Art Center.**

6:00 pm: Tour and history of the Torpedo Factory followed by light refreshments.

7:30 pm: Lecture by Rick Moody, internationally known author, lecturer, and Director of Academic Affairs at AARP. The lecture will include both an overview of works by great artists in their later years and lessons for enhancing creativity in the second half of life.

**Painting with Words: Creating An Effective Artist's Statement: Saturday, January 22, 2011, 1:00 - 3:00 pm.**

David Hazard is professional writing coach and publishing consultant who has worked with artists for more than 25 years, helping them communicate effectively. This two hour workshop will help you locate the central images of your art and via simple, powerful statements, lead those who view your works into the concepts, experiences, sensations, and viewpoints that drive you to create. Any artist who needs help beginning or refining their statement, or who needs help understanding how to market their own product, can benefit from this lively, interactive workshop.

Space is limited, so call the gallery at 703-683-1780 or email [roseo@theartleague.org](mailto:roseo@theartleague.org) to reserve your space.

Check out **The Art League blog** throughout the month for up-to-the-minute exhibition opportunities, Art League news, and much more!

---

**Become a Benefactor of The Art League**

*"Personally, The Art League changed my life. I was a professional writer when I started taking classes at The Art League. I was nervous, thinking I'd be in over my head. I may have been, but the teachers at The Art League encouraged me to explore new territory. Because of their commitment, a whole new world opened up for me... Without The Art League, I would not have known I could paint."*

*—Cindy Packard Richmond, Art League student, gallery member, and Torpedo Factory artist*

As you make your plans for end-of-year giving, we hope that you will think of The Art League this year. Like most educational and arts nonprofit organizations, our program fees only cover part of our operational costs. Our Benefactors make up that difference and truly sustain the organization! Your generous gifts enable us to engage excellent instructors in our renowned fine arts school; open our gallery and offer lectures, tours, and demonstrations free of charge; offer outreach services to those in need; and keep our classrooms stocked and the lights on.

To those Benefactors who have already made a gift this season, we offer our most sincere thanks! If you have not, we hope you will consider joining our society of Benefactors today.

Best wishes for the holiday season!

—The Art League Board of Directors

*Make a contribution and become a Benefactor of The Art League by visiting our website. The Art League is a 501(c)(3) nonprofit organization, and all contributions are tax-deductible.*



*Rosemary Feit Covey's 2010 solo artist exhibition. Photo: Pete Duvall.*

---

**School News**

**Creative Opportunities in the New Year**

The first week January and the weekend of January 8 & 9 will host several interesting workshops for those who can't wait to get started in the New Year. A sampling follows:

Jumpstart in Sumi-é with Betzi Robinson, \$170, January 8 & 9

Portrait Photography with Robin Reid, \$170, January 8 & 9

Jumpstart in Abstract Landscapes with Brenda Belfield, \$170, January 8 & 9

Contemporary Vision with Kathy Beynette, \$170, January 8 & 9

Problem Parts: Hands & Feet with David Carter, \$170, January 8 & 9

The Language of Line with Lisa Semerad, \$255, January 4-6

Monotype and the Figure with Penny Barringer & Roberta Glick, \$225, January 4-6

## Winter Classes

The Winter Term will start on Monday, January 10. There is still time to register for a class. Think about giving yourself or someone else the gift of art class to start a creative new year.

## 2011 Student/Faculty Show

The show will be featured February 20 - March 6, 2011 in The Art League Gallery. Receiving is Monday, February 21, 10:00 am - 12:00 noon and 5:30 - 8:30 pm in The Art League Gallery ONLY! Submission guidelines will be available this month at the Torpedo Factory Art Center, the Duke Street Annex, and the Madison Annex. We are also looking for volunteers so please call the school office (703-683-2323) if you are interested in helping out!

## Art Camp Faculty/Interns Needed

As the school gears up for a big summer season, we will be interviewing instructors for our summer camps. Those with expertise in teaching drawing, painting, sculpture, ceramics, photography, or mixed media to kids of all ages are encouraged to apply. Innovative projects and high energy are musts! Part-time and full-time internships for possible college credit are also available. For details please contact Art Camp Coordinator, Ali Procopio, in the school office at 703-683-2323.



by Lisa Semerad

---

## Upcoming Travel Workshops

Visit our website to read more about these workshops and download the informational brochures.

### "A Back-Door Tour" of Santa Fe & Ghost Ranch, New Mexico Exploring Art, Glass and Clay with Blair Meerfeld March 23 - 28, 2011

\*\*Santa Fe Information Night, Thursday, January 13, 2011 7:00 pm. Madison Annex. Blair will discuss the locale for his upcoming workshop. All are invited to attend.\*\*

As a former resident and working artist in this community, Blair is offering his hands-on knowledge and expertise to workshop participants. Blair was raised in this area and actually began his art career in Santa Fe. As a former artisan of Tesuque Glassworks (blowing glass and casting glass sculptures) and Shidoni Foundry, Blair is extremely knowledgeable of the area and its arts scene. He is offering a "behind the scenes" experience of some of the finest artwork in the current market.



On the agenda: The Ghost Ranch at Abiquiu (inspiration for Georgia O'Keeffe's paintings) with private guide, Shidoni Foundry, Tesuque Glassworks, and the famed Canyon Road Gallery District. There will also be a day trip to Taos, via the historic weaving community of Chimayo. On the way back to Santa Fe, being extremely familiar with the vistas and surrounding communities, Blair will guide you over the spectacular Rio Grande Gorge bridge (which spans 1000 feet above the water). Be prepared for some absolutely magnificent photo ops as you proceed back to Santa Fe through the tiny old settlements of Tres Piedras and Ojo Caliente (site of the historical Santa Cruz Church, one of the oldest in all of New Mexico).

\$1,280 per person, double occupancy. Limited singles available at an additional charge.

### Winter Retreat to Elbow Cay, Bahamas Plein Air Painting with Susan Abbott February 9 - 14, 2011

When it is snowing on the East Coast, escape to Elbow Cay, an island known for its spectacular white sand beaches and aquamarine waters...

Elbow Cay is a tiny gem amongst the tiny islands that make up the Bahamas. Pastel clapboard cottages are linked with white picket fences overflowing with tropical foliage, hibiscus, and bougainvillea. Only six miles long and one quarter of a mile wide, Elbow Cay boasts a magnificent barrier reef that protects its sandy coastline. The area is perfect for water activities including snorkeling, swimming, and fishing. It is also perfect for plein air painting!

Your workshop will be based in this scenic locale. Internationally known instructor and artist Susan Abbott will lecture and demonstrate on capturing Elbow Cay's distinctive light and atmosphere. Open to painters of all media, all painting activities will be conducted outdoors. A typical day starts with a lesson and demo by Susan in a location specifically chosen for the theme and light of day. Afterwards, students start on their own pieces or may continue to watch Susan develop her own work. Students will paint at least two views or different locations each day, chosen specifically to capture the morning or afternoon/early evening light. Artists are guided in their work with individual consultations/critiques as well as group exercises and activities.

\$1,595 per person, double occupancy. Limited singles available at an additional charge.

**The Coastal Towns of Southern France: Le Cote de Vermeille, "Vermillion Coast"  
Plein Air Painting with Peter Ulrich  
May 22 - 29, 2011**

\*\*Coastal Towns Information Night, Wednesday, January 19, 7:00 pm in The Art League Gallery. All are invited. Peter will show examples of his work and discuss the location and agenda for this upcoming workshop.\*\*

Be inspired and paint the French seacoast en plein air as masters in the past have done!

Just south of the French Riviera lies the rugged and indented coastline of the Cote Vermeille. The sienna colored earth and rocky formations gives this locale its name. The Pyrenees sweep down to the sea, and nestled amongst the inlets lie charming little seaside towns and coastal villages that were frequented by French artists in the early 1900's. Collioure is one of these beautiful little coastal gems. Henri Matisse and Andre' Derain painted every corner of this scenic little port.

Open to painters of all media. An emphasis will be placed on capturing the effect of light in this exquisite coastal locale. Good drawing, effective composition, clean color, and strong values will be stressed. Peter is an experienced international artist and his vast library of painting journals attest to this. He has painted in many locales – especially in the British Isles and France. A prolific and rapid painter, Peter is able to pass on a great deal of information in a short amount of time. Students will paint in at least two locations each day. Daily demos, individual guidance, and group critiques in a relaxed and productive atmosphere are on the agenda.

\$1,725 per person, double occupancy.

**For reservations or information contact:**

Margaret Cerutti: 703-683-1780 x 13 | email: margaretc@theartleague.org

---

**December Juror's Dialogue and Awards**

**December 2010 All-Media Exhibit  
Juried by William Schran**

Juror's Dialogue with Erica Fortwengler

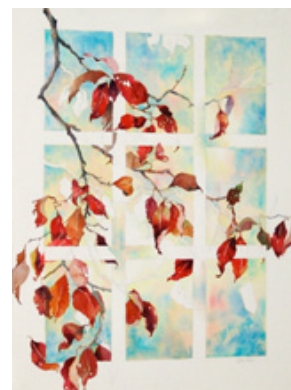
Artist and instructor William Schran looks for work that immediately speaks to him when jurying an exhibit. A successful work needs to be technically strong and the artist needs to demonstrate knowledge of materials, yet the piece needs to step beyond convention. Even with realism and super-realism, there needs to be something to make the piece stand out as being different and unique. Visit our website to read the full article.

**Awards:**

**The Marker Award:** Karen Roll

**The Carolyn Zakaski Award:** Alice Kale

**Honorable Mention:** Ellen Delaney, Wendy Donahoe, Marcia Jestaedt, Carol Leadbetter, Trudy Levy, Jo Ellen Murphy, Tess Olson, Lillis Werder.



*by Alice Kale*

## **March Gallery Exhibit: *Carnivalé***

**Receiving:** Monday, March 7, 6:30 - 8:30 pm and Tuesday, March 8, 10:00 am - 12:00 noon.

**Juror:** David Page, sculptor and adjunct professor at Towson University and Corcoran College of Art+Design.

**Reception:** Thursday, March 10, 6:30 - 8:00 pm. Awards at 7:30 pm.

**Awards:** TBA

**About This Exhibit:** For this exhibit, the Art League invites artists to explore the meaning of the word "carnival." Consider the parades and feasts of the centuries-old pre-Lent festival, *Carnivalé*. Keep in mind alternate definitions of carnival, which evoke circuses, revelry, sideshows, and merriment. Theme shows at the Art League Gallery are created to stretch the member artists' minds and are up for interpretation. Visit our website to find out more.

---

## **Board Message**

**Happy New Year!** It's January, named for Janus: god of gates, doors, doorways, beginnings, endings, and time in Roman mythology, who is most often depicted as having two heads: one looking back and the other looking forward – viewing past and future simultaneously.

Like Janus, this is the time of the year when we can look ahead to the year before us, waiting for us to shape it; to give it form and meaning. To do that, we look back to see where we started and how far we have come. From this vantage point, the decisions we must take to chart our course, to stay the course, or to make adjustments here and there become more clear.

What is The Art League? The short answer is that it can be seen as a major component of the cultural fabric of Alexandria and the region. We offer high-quality fine art education for 8,000-10,000 students annually through our school, we are a vigorous participant in art-based community outreach programs, and, through our galleries, provide the public with the opportunity to view and purchase high-quality original art created by our more than 1,000 members in juried shows, and by our students and faculty at our gallery space across the river at National Harbor.

That sets the bar pretty high. What got us there?

We have a phenomenal, award-winning, staff that puts everything together and is incredibly adept in keeping things together when times turn tough. Look at the fantastic job they did during 2010's "Snowmageddon" when winter storms wrought havoc on the school schedule and the Patrons' Show. Great work on the part of the staff kept the classes going (just imagine the logistical nightmare they faced with limited classroom and studio space), and thanks to quick response by our staff and excellent communication with the region's media outlets, the one week postponement of the Patrons' Show did not diminish the festive atmosphere and the enjoyment of all the 550+ ticket holders who attended or the staff and volunteers who assisted that Sunday.

We have a school that has served as a model for others in this area in around the country, with an innovative administrative staff, high quality faculty, and a loyal student body that occupies on the order of 10,000 seats in classes each year. To complement the school, our store offers supplies and services to our students and members at reasonable prices in a convenient location.

We have gained national recognition for our community outreach programs, especially for our partnership with the city's Court Service in the SOHO (Space Of Her Own) program for at-risk girls. We are also major sponsors, with the Torpedo Factory and Del Ray Artisans, in the Art in City Hall program.

Our Art League Gallery, Bin Gallery, and Solo Artist Gallery provide juried exhibit opportunities for our more than 1,000 members as well as faculty and students. We also have gallery space across the river at National Harbor where work from our school's students and faculty is showcased. This year the gallery has expanded its program of seminars and critiques for our members.

We could not exist without our volunteers. You know who you are. You make our gallery possible with receiving, jurying, and hanging. You make mailings to our membership and students possible. You staff receptions, the Patrons' Show, committees, and, yes, even the Board. You're the best!

Not-for-profit organizations cannot exist without funding. We treasure our benefactors, each and every one of you who help us to go forward. Whether you give \$1 or \$10,000, we thank, thank, thank you so very much. We also have a wonderful Development organization that works so very hard on grants and an innovative development committee that has given us fun fund-raising opportunities like "Art on the Rocks."

Don't forget the Patrons' Show next month. There are three ways to participate: Donate your work, buy a ticket, volunteer. If you haven't attended, you've missed a real rush! And mark your calendars for ArtFest next December – it's rapidly approaching the fun levels of the Patrons' Show, packed with people enjoying jewelry, ceramics, and fabrics, the music, and each other.

Each year that I have been privileged to serve on your Board, I have seen The Art League accomplish things that continually redefine "excellence" in all of our endeavors. And we do it despite a changing set of challenges.

Our major challenges for 2011 are maintaining our continued funding in a depressed economic climate that can affect our school attendance, our gallery sales, the availability of grants, and income from our annual giving campaign. We also must continue our planning for the impact of Alexandria's planned Waterfront Redevelopment. Two of our three facilities (Torpedo Factory Building and Duke Street Annex) are located directly in the area being studied and our third (Madison Annex) borders the area. We also need to continue to develop innovative ways to continue serving our constituency of members, students, faculty, and the public.

We can do it because we are The Art League. We have a tradition of excellence. Perhaps that's why we were one of 70 organizations selected as "One of the best small [charitable organizations] in the Greater Washington region" by a 100 member panel out of 250 applicants for inclusion in The Catalogue for Philanthropy – DC for 2010-2011.

Duke de Planque  
Art League Board, Member-at-Large

---

### 2010–2011 Board of Directors

President: Betsy Anderson

First Vice President: Nancy Pane Fortwengler

Second Vice President: Jane McElvany Coonce

Recording Secretary: Betsy LeBleu Curry

Treasurer: Ellen Fishbein

Members-at-Large: Emile "Duke" DePlanque, William Doying, Maggie Garten, Diane Tesler, Patsie Uchello, Elizabeth Weathers, Edward Yawn

Advisory Committee:

Charles K. Collum, Jr., Val P. Hawkins, Patricia Hertzberg, Timothy McEvoy, Cora J. Rupp, Beth Temple, Marian Van Lindingham.

### Featured in the 2010/11 Catalogue for Philanthropy.

"One of the best small charities in the Greater Washington region."

We appreciate the support from the Virginia Commission for the Arts, National Endowment for the Arts, Alexandria Commission for the Arts, United Way/CFC.



**theartleague**  
105 North Union Street  
Alexandria, VA 22314  
www.theartleague.org  
gallery: 703-683-1780  
school: 703-683-2323  
store: 703-548-8127  
development: 703-519-1741

## Calendar

### January 2011

January 1/Saturday: Art League and Torpedo Factory CLOSED for New Years Day.  
January 3/Monday, 6:30–8:30 pm: Receiving for **All-Media Exhibit** and **Bin Gallery**.  
January 4/Tuesday, 10:00 am–12:00 noon: Receiving continues.  
January 4/Tuesday, 6:30–7:30 pm: Early retrieval of unselected works.  
January 6/Thursday: Allison Sigethy's solo exhibit **Understory** opens.  
January 10/Monday: Winter Term begins in the school.  
January 13/Thursday, 6:30–8:00 pm: **Opening reception** for January All-Media Exhibit and Alison Sigethy's **Understory**.  
Performance by Karen Reedy Dance. Awards presented at 7:30 pm.  
January 15/Saturday, 10:00 am: Patrons' Show tickets go on sale in the gallery.  
January 20/Thursday, 7:00 pm: Artist talk with solo artist Alison Sigethy in the gallery.  
January 22/Saturday, 1:00 - 3:00 pm: Painting with Words seminar with David Hazard.  
January 23/Sunday, 1:00 - 2:00 pm: Storyteller Laura Bobrow tells tales appropriate for all ages in conjunction with Alison Sigethy's Understory.

### February 2011

February 7/Monday, 10:00 am - 8:30 pm: Receiving donations of artwork for the Patrons' Show fundraiser.  
February 16/Wednesday, 6:00-9:00 pm: Gallery open late to view the Patrons' Show.  
February 20/Sunday, 5:00 pm: Patrons' Show drawing in the main hall of the Torpedo Factory.  
February 21/Monday, 10:00 am - 12:00 noon and 5:30 - 8:30 pm: Receiving in The Art League Gallery for the Student/Faculty Show.